

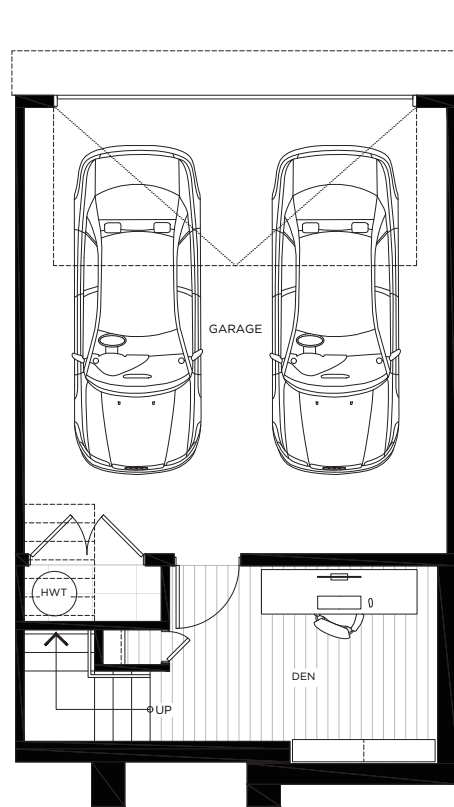
PLAN B4

3 Bedroom + Den & 2.5 Bath

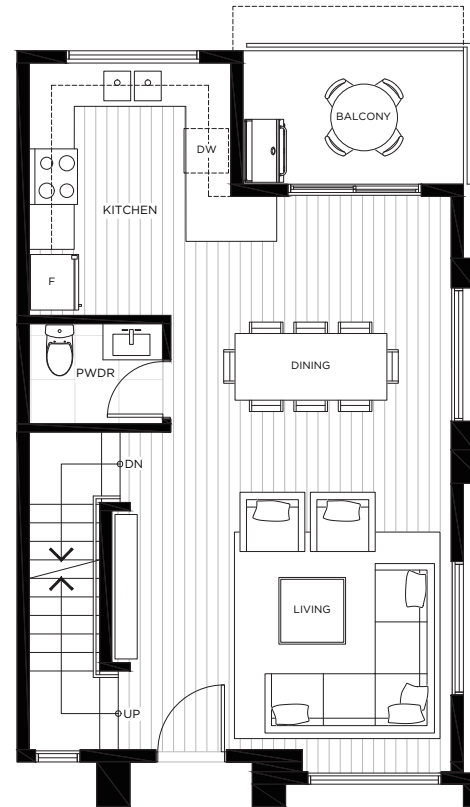
Interior	1,459 sqft
Balcony	59 sqft
Garage	417 sqft
Total	1,935 sqft



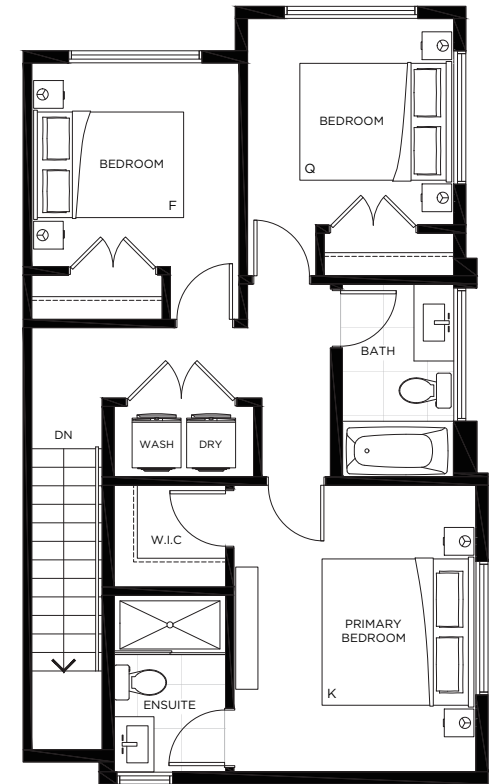
HARMONY
LIFE IN BALANCE



LOWER



MAIN



UPPER



liveatharmony.ca

The developer reserves the right to make changes, modifications or substitutions to the building design, specifications, and floor plans should they be necessary. Final floor plans may be mirror images of the Floor plans shown. Square footage and room sizes are based on the preliminary survey measurements. Sizes are approximate and actual square footage may vary from the final survey and architectural drawings. E.&O.E.